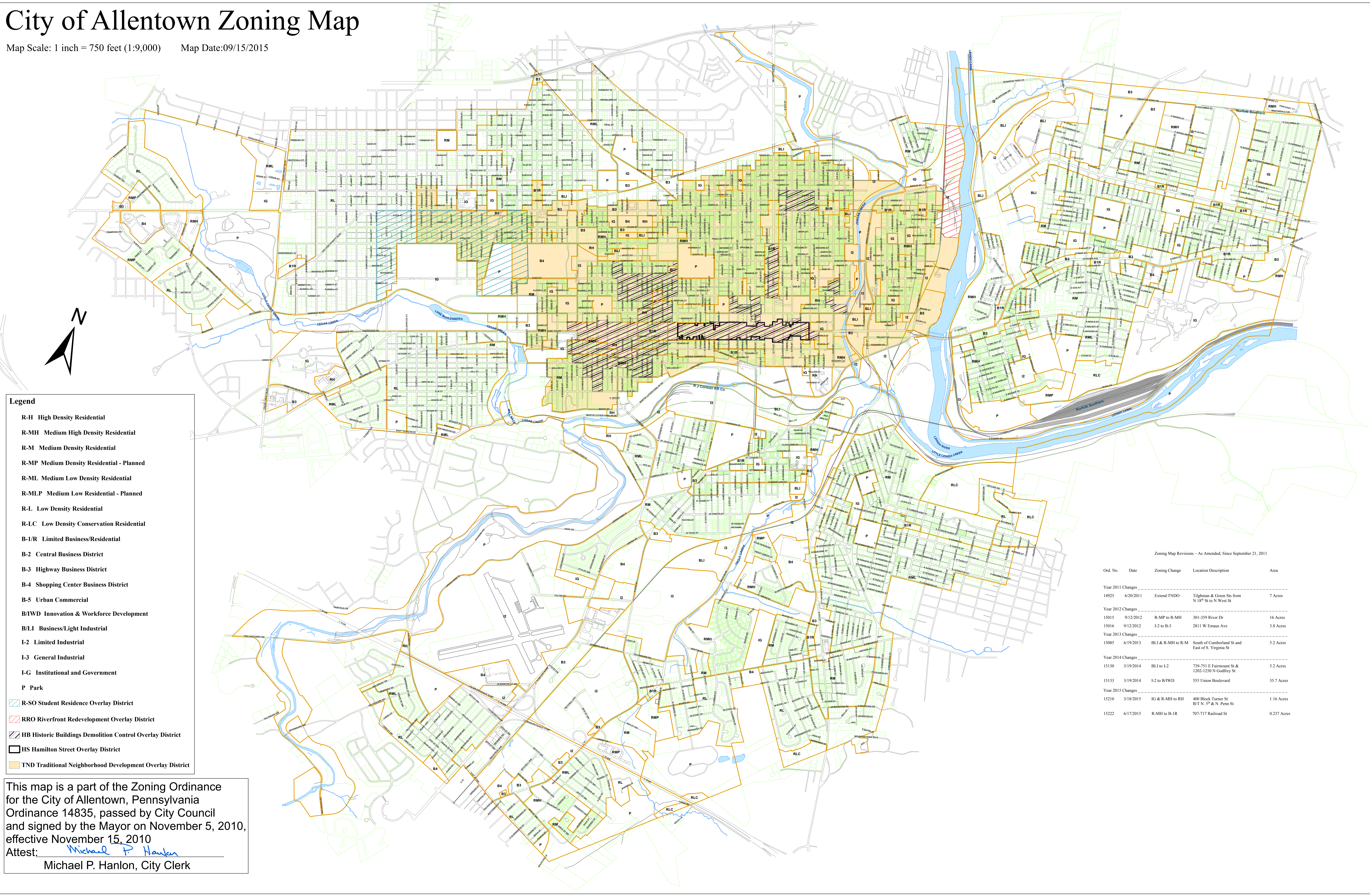


City of Allentown Zoning Map

Map Scale: 1 inch = 750 feet (1:9,000) Map Date: 09/15/2015



- Legend**
- R-H High Density Residential
 - R-MH Medium High Density Residential
 - R-M Medium Density Residential
 - R-MP Medium Density Residential - Planned
 - R-ML Medium Low Density Residential
 - R-MLP Medium Low Residential - Planned
 - R-L Low Density Residential
 - R-LC Low Density Conservation Residential
 - B-1/R Limited Business/Residential
 - B-2 Central Business District
 - B-3 Highway Business District
 - B-4 Shopping Center Business District
 - B-5 Urban Commercial
 - B/WD Innovation & Workforce Development
 - B/LI Business/Light Industrial
 - I-2 Limited Industrial
 - I-3 General Industrial
 - I-G Institutional and Government
 - P Park
 - R-SO Student Residence Overlay District
 - RRO Riverfront Redevelopment Overlay District
 - HB Historic Buildings Demolition Control Overlay District
 - HS Hamilton Street Overlay District
 - TND Traditional Neighborhood Development Overlay District

This map is a part of the Zoning Ordinance for the City of Allentown, Pennsylvania Ordinance 14835, passed by City Council and signed by the Mayor on November 5, 2010, effective November 15, 2010
 Attest: *Michael P. Hanlon*
 Michael P. Hanlon, City Clerk

Zoning Map Revisions – As Amended, Since September 21, 2011

Ord. No.	Date	Zoning Change	Location Description	Area
Year 2011 Changes				
14925	6/20/2011	Extend TND	Tighman & Green Sts from N 18 th St to N West St	7 Acres
Year 2012 Changes				
15015	9/12/2012	R-MP to R-MH	301-359 River Dr	16 Acres
15016	9/12/2012	I-2 to B-3	2811 W Ermas Ave	3.8 Acres
Year 2013 Changes				
15085	6/19/2013	BLI & R-MH to R-M	South of Cumberland St and East of S. Virginia St	5.2 Acres
Year 2014 Changes				
15130	3/19/2014	BLI to I-2	739-751 E Fairmount St & 1202-1250 N Godfrey St	5.2 Acres
15133	3/19/2014	I-2 to B/WD	555 Union Boulevard	35.7 Acres
Year 2015 Changes				
15210	3/18/2015	IG & R-MH to RH	400 Block Turner St B/T N. 5 th & N. Penn St	1.16 Acres
15222	6/17/2015	R-MH to B-1R	707-717 Railroad St	0.237 Acres